

Piano **suite** Classroom

Chapter 1: Lesson 6

Chapter 1: Introductory Theory, The Treble Clef, Bar Lines, Note Values, Rests, & The Bass Clef

Lesson 6

This lesson plan was written for use with Piano Suite Premier software, and is intended as a guideline and procedure for 1 week (6 hours) of music instruction. For specific information on Piano Suite Premier and how to purchase, please visit one of the following links:

<http://www.adventus.com/purchase/premier.html>

<http://www.adventus.com/purchase/bundle.html>

Lesson Overview

- The student will review the following additional piano exercises using the “Wait for Note method” until a score of “Excellent” can be achieved: “Lesson 5, exercises 1 to 4” (found within the Custom library of songs).
- The student will play the game Word Play to review the names of the keys on the piano keyboard.
- The student will create a song in Composer’s Corner using the notes F to middle C on the bass clef staff.
- The student will practice the following piano exercises which are found within the Theory Topic: The Bass or “F” Clef and achieve a score of 85 % (or higher): (i) Topic 07, Page 04, Exercise 01; (ii) Topic 07, Page 06, Exercise 01; (iii) Topic 7, Page 08, Exercise 01.

Review Material

Piano exercises :

- Lesson 5, Exercises 1 to 4 (found within the Custom library of songs).
- Piano exercises from the Theory Topic: 1-3 The Bass or “F” Clef:
 - Topic 07, Page 04, Exercise 01
 - Topic 07, Page 06, Exercise 01
 - Topic 7, Page 08, Exercise 01.
- Names of the keys on the piano keyboard.

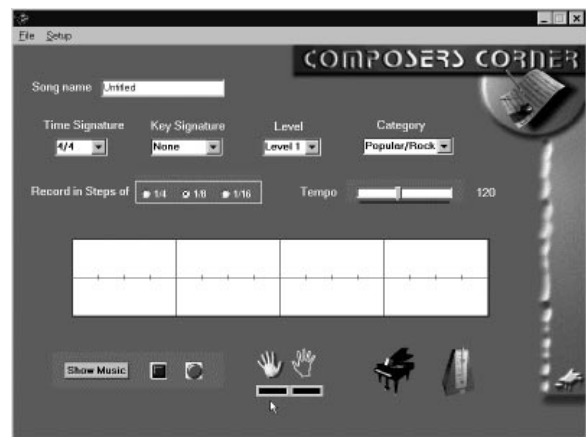
Procedure

Go to the Piano Player and practice the “additional” exercises from Lesson 5 which are located in the Custom library (“Lesson 5, exercises 1 to 4”). Practice these exercises using the “Wait for Note method” until a score of “Excellent” can be achieved.



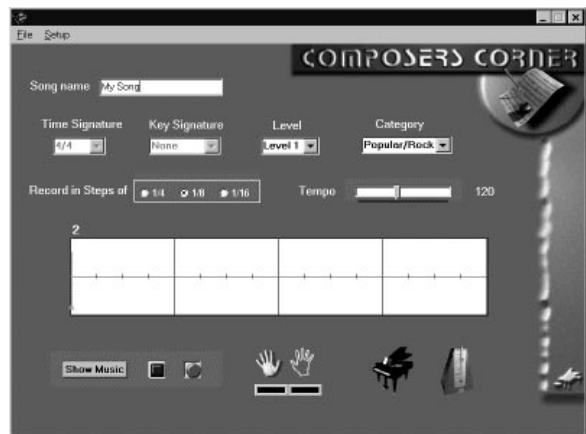
Now select the “Word Play” game which is the top/right game located in the Theory Thinker. Play this game until you can complete 9 out of 10 words correctly (90%).

It’s now time to create a song in Composer’s Corner. For this lesson, your piece will be four bars long, in 4/4 time and will use the notes middle C down to the note F , which is located on the 4th line down on the bass clef staff. You can use any of the following rhythms when composing your song: whole, half, quarter and eighth notes. (For a review of these rhythms see the Theory Topic: “Bar Lines and Note Values”.) You can also use the whole, half, quarter and eighth note rests. (To review the “musical rest” see the following Theory Topic: Musical Rests pages i - iv.)

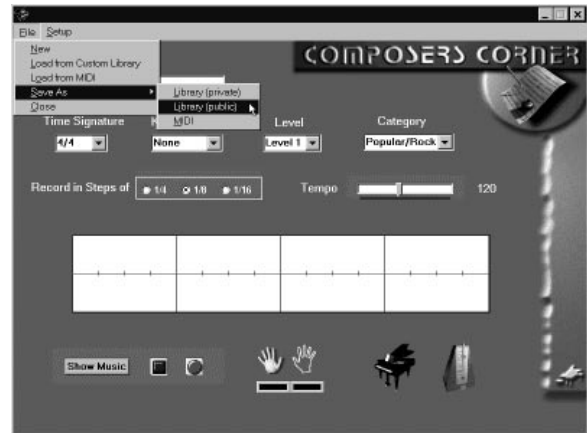


Begin by selecting the left hand (bass clef staff) on the Composer’s main form. Make sure to unselect the right hand. Place your left hand thumb on the note “middle C”. Now you will place finger 2 on the note “B”, finger 3 on the note “A”, finger 4 on the note “G” and finger 5 on the note “F”. Count the beat either to yourself or out loud. As you say the beat, “1, 2, 3, 4”, try playing the notes with your left hand. Experiment until you have a melody (tune) and rhythm that you like. Practice the melody until you can play it without any mistakes.

You should now select the tempo at which you would like to record your song. Click on the record button and then press a key on the piano keyboard to begin the metronome countdown. After you see and hear the countdown, begin playing your piece. When you are finished recording click on the blue “stop” button.



Click on the “Show Music” button to see what you have recorded on the staff. You can now edit your song by clicking on the edit tool. (See the user manual or Piano Suite’s help for more detail with regards to editing) Make sure that your piece only contains the rhythmic and melodic elements outlined above. When you are finished editing your piece, exit the player view, type in a descriptive name for your composition, and save it as a “Custom Library” piece.



Do you like the melody of your composition? Does it sound like a complete “idea” or phrase? What note did you end your song on? Does it sound as though your song comes to a resolution at the end, thus giving you the feeling that you have reached the end of the song? If not, try ending your song on one of the other notes which are used for this song.

Open the Theory Thinker and practice the following piano exercises which are found within the Theory Topic: The Bass or “F” Clef and achieve a score of 85 % (or higher) using the “Notes and Timing” method:

- Topic 07, Page 04, Exercise 01
- Topic 07, Page 06, Exercise 01
- Topic 7, Page 08, Exercise 01.

Indicators of Success

- You achieve the score of “Excellent” while practicing the “additional” exercises from Lesson 5 using the “Wait for Note” method.
- You complete 9 out of 10 words correctly in the Word Play game.
- You create your own song while staying within the limits outlined for this exercise.
- You score 85 % or higher on each of the following piano exercises which are found within the Theory Topic: The Bass or “F” Clef:
 - Topic 07, Page 04, Exercise 01
 - Topic 07, Page 06, Exercise 01
 - Topic 7, Page 08, Exercise 01.

Enrichment Activities

Write lyrics which match the rhythm of your own composition.

Hints

* Remember that you can go back to a previous lesson, exercise or song at any time. For example, you may find it helpful to go back and review the material for the treble and bass clefs at this time.