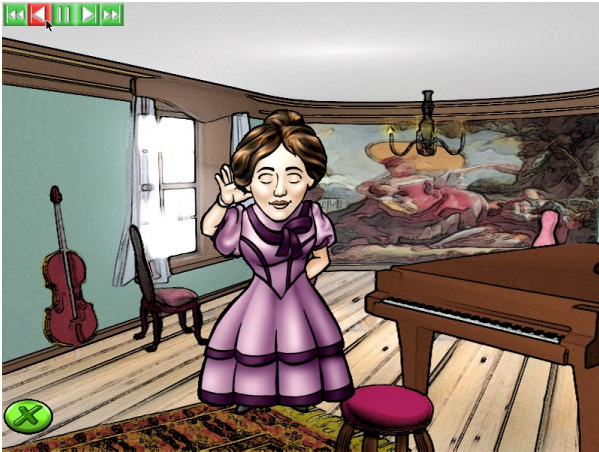




## Lesson 18

### Today in Class



Today Miss Fanny Mendelssohn told us about the big parties at her house each Sunday evening. Lots of people would get together to play music and listen to music. Fanny and her brother Felix spent a lot of time during the week preparing new music for these parties. We heard a "Nocturne" that Fanny wrote. Do you remember what "Nocturne" means? We reviewed our backwards alphabet and we learned a new song! "Mary Had a Big, Fat Sheep!" It sounds like "Mary Had a Little Lamb" but we play it using our left hand. It's funny!

### This Week at Home

- Review the lesson with Miss Fanny Mendelssohn and see if you can make a "Nocturne". Maybe at your house you can invite family and friends over for a musical party!
- Miss Melody will help you with the new song "Going Farther". Is this a good name for this song?
- Play "Mary Had a Big, Fat Sheep" and sing along! When you play it you could make up your own words about your pet, "Mummy has a great big dog..." or "Grandpa has a small white cat".
- Maybe the words won't be about a pet! You could make a song about something else you like "Jason loves his yellow boots". What's something special to you?
- See if you can play all the games this week. Which game is your favorite?